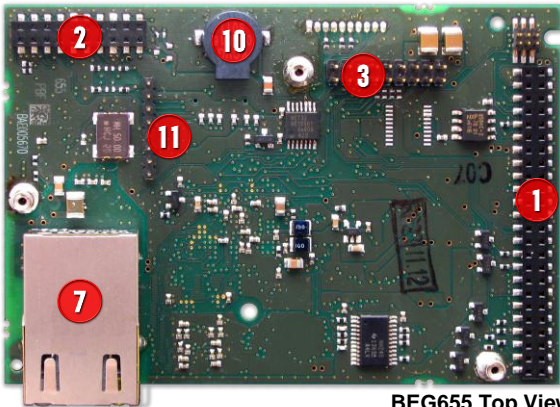
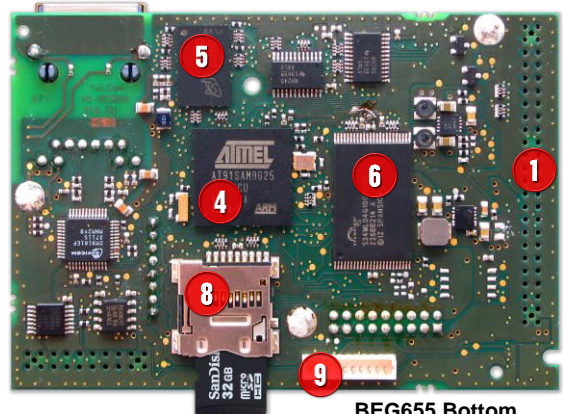


Tixi.Gate Board B600



BEG655 Top View



BEG655 Bottom

| Tixi Mainboard | B600 |
|-------------------|--------------------|
| MPU | ARM9 Atmel SAM9G25 |
| Speed | 400 MHz |
| Max. RAM | 256 MB |
| Max. Flash Memory | 8 GB |
| Max. MicroSD Card | 32 GB |
| Operating System | Linux 2.6.39 |

| RAM Options | | | | | | |
|-------------|---|----|----|----|-----|-----|
| B6x- | 1 | 2 | 3 | 4 | 5 | 6 |
| RAM MB | 8 | 16 | 32 | 64 | 128 | 256 |

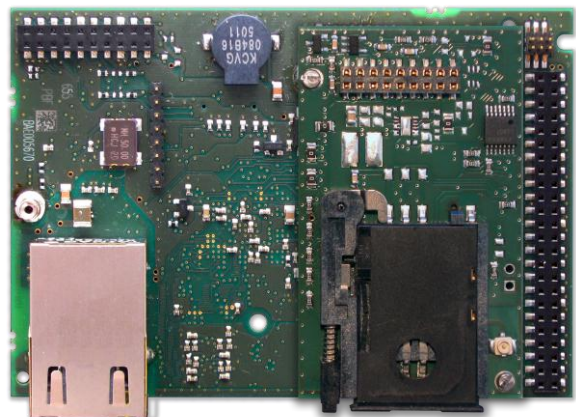
| FLASH Options | | | | | | | | | | | | | |
|---------------|-------|-------|--------|--------|--------|------|------|------|------|-------|-------|-------|--------|
| B6-y | 1 | 2 | 3 | 4 | 5 | 6 | 7 | 8 | 9 | A | B | C | D |
| FLASH | 32 MB | 64 MB | 128 MB | 256 MB | 512 MB | 1 GB | 2 GB | 4 GB | 8 GB | 16 GB | 32 GB | 64 GB | 128 GB |

| Standard Boards with RAM + FLASH | | | | | | | |
|----------------------------------|-----|-----|-----|-----|-----|-----|------|
| Model B6xy | 642 | 653 | 654 | 655 | 664 | 665 | 666 |
| RAM MB | 64 | 128 | 128 | 128 | 256 | 256 | 256 |
| FLASH MB | 64 | 128 | 256 | 512 | 256 | 512 | 1024 |

| Features |
|--|
| Ethernet 10/100 Mbit/s |
| WiFi-Module 802.11b/g/n on X5 with 2 antenna options: - internal antenna: for short range (iPhone, WLAN PC) - external antenna: for standard wireless communication |
| GSM socket with UART and USB on X4 for GPRS/EDGE-, UMTS/HSPA+, LTE-modules SIM card holder Push-Lock or Open Cover |
| GPS module on X5 |
| 56k PSTN Conexant modem, option on C-Board |
| 2x I ² C, 1x SPI, 2x SDIO |
| 3x USB, 4x UART, JTAG, Speaker |
| Serial TTL-console port on X1 and C-board |
| EEPROM 512 Byte (or higher) |
| RTC Real Time Clock (internal, option: external) |
| Operating temperature: -25°C to +80°C |
| 84.50 x 58.60 mm |

Components

- (1) X1 = Processor I/Os + power + USB + I2C
- (2) X2 = Serial + USB + I2C
- (3) X4 = GSM/GPRS UMTS/HSPA; serial + USB
- (4) CPU Atmel AT91SAM9G25
- (5) DDR2-RAM
- (6) Flash Memory
- (7) X3 = Ethernet RJ45
- (8) MicroSD-card reader
- (9) JTAG Interface
- (10) Speaker
- (11) X5 = WiFi / GPS Connector
- (12) Cryptochip
- (13) Power Controller



BEG655 Top View with GSM Module



GSM Module Bottom



GSM Module Top